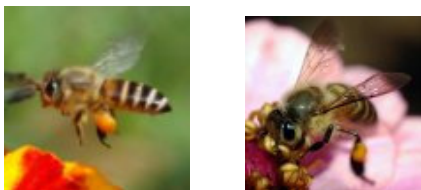


Fancy Beekeeping?

There is probably no more rewarding hobby than beekeeping, and nothing gives greater pleasure than eating honey from your very own hives! A whole new world awaits you in the fascinating study of honeybees, their role in the environment, their social behaviour, and the workings of a beehive.



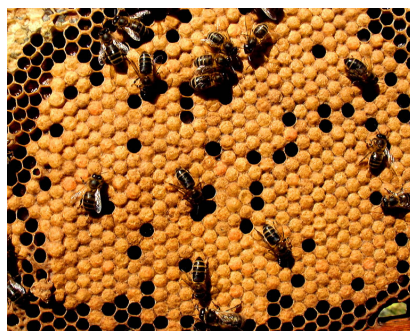
Is Beekeeping for me?

Location. Many gardens may accommodate a couple of hives providing they are sited sensibly, with adequate screening from neighbours. Alternatively a careful search of your own area could provide you with a suitable site on a farm, or similar place where there is often a small area of waste ground.

Time & Commitment. The keeping of even a few (3 or 4) stocks of bees demands roughly one afternoon a week during the active season from April to August. In addition a fair amount of time will be required in August-September to process the honey crop. If heather honey is sought, more late season (August-October) work is involved. Bees satisfactorily bedded down for winter need very little attention from October to March, other than any recommended treatments for varroa.

Physique. The beekeeper should be reasonably fit as there can be some heavy lifting to do.

Cost to Start. Initially to purchase a single hive and the necessary beekeeping equipment and protective gear will cost a few hundred pounds. Annual running costs however are low. Beekeeping is certainly much cheaper than many hobbies, and if you take into account the honey that you haven't got to buy it becomes quite reasonable.



Brood

What's next?

If you have decided to pursue beekeeping as a hobby, then it is a good idea to make contact with the EMBA. Enroll with the beginners class, make new friends and enjoy the fascinating world of beekeeping.



Young queen emerging

Why Join the Edinburgh & Midlothian Beekeepers Association?

Being a member of the EMBA makes a lot of sense, here are some of the benefits:

- Membership of a friendly society
- Access to expert advice and support on all aspects of beekeeping
- Access to a network of beekeepers throughout the Lothians area
- Beekeeping beginners classes
- Free admission to a series of winter lectures and summer visits
- Up to date and informative website including a useful beekeepers forum www.edinburghbeekeepers.org.uk



- EMBA is affiliated to the Scottish Beekeepers Association (SBA) which is the National beekeeping organisation for Scotland.



SC009345

- Details of SBA membership and its benefits can be found at www.scottishbeekeepers.org.uk

Beginners Classes

The EMBA runs an annual Beginners Class in the spring of each year (one evening per week from mid March through May). The classes cover the theoretical and practical basics of beekeeping and give a sound grounding for the new beekeeper. The classes are also a good place to meet other beginners and form mutual help friendships.



Practical classes

How much does it cost?

Membership subscription for the EMBA is £5.00 per year payable yearly in January.

Join the EMBA now!



Honey Show

JOINING EMBA



'... for the encouragement and advancement of beekeeping'

How to Join the EMBA

Register on line at:

www.edinburghbeekeepers.org.uk

Alternatively you can apply in writing to:

Rachael Gibbins
Treasurer EMBA
21 Gilmerton Dykes Gardens
Edinburgh
EH17 8JL

Tel. 0131 664 5658

EMBA



Edinburgh &
Midlothian
Beekeepers
Association

(Est. 1894)



www.edinburghbeekeepers.org.uk